

# MURAL IRONERS



---

# MURAL IRONERS

## INDEX

- 1.- Product range - Overview
- 2.- Classification
- 3.- Main features
- 4.- Accessories and Options
- 5.- Technical data
- 6.- Sales arguments and marketing tools

# 1. PRODUCT RANGE - OVERVIEW

Wall ironers have

- ✓ 2 ranges, Ø 180mm and Ø 250mm,
- ✓ with several widths options: 1000, 1200 and 1400mm.

Roll ø	Heating	Roll length (mm)		
		1000	1200	1400
180 mm	Electric	R-18/100	R-18/120	-
250 mm	Electric	R-25/100	R-25/120	R-25/140

## 2. CLASSIFICATION

### HEATING:

- **Electric heating [E]:** roller heating by means of heating elements

## 3. MAIN FEATURES

- ✓ User's friendly
- ✓ Reliable
- ✓ Robust
- ✓ Competitive

Ideal for :

- Restaurants
- Guest houses
- Care homes

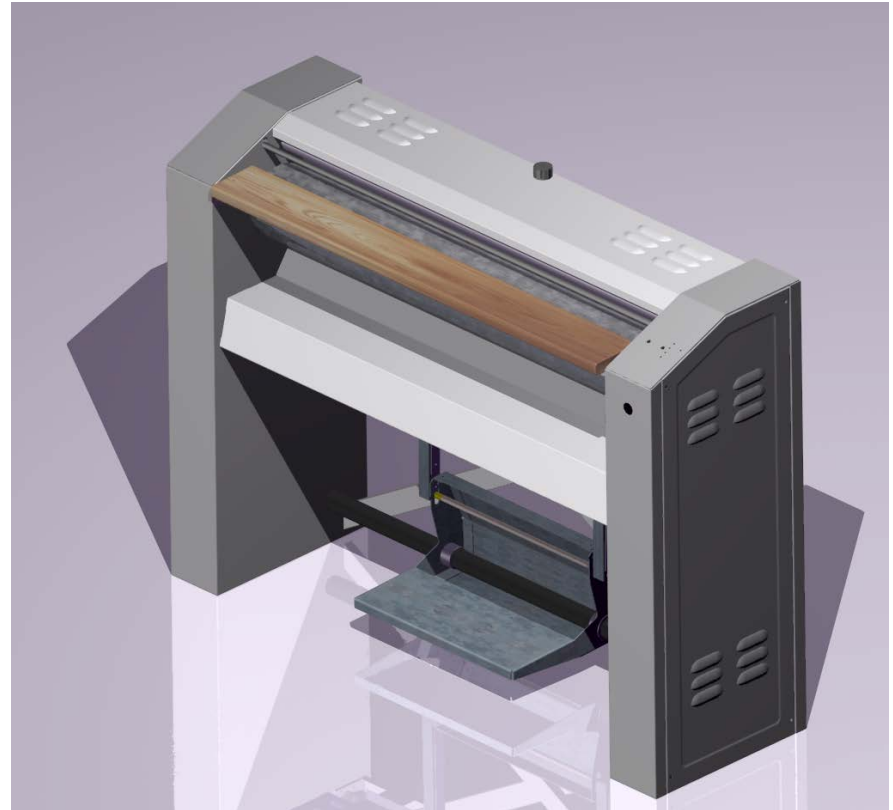
## 3. MAIN FEATURES

- Wall ironer
- Front feed and return
- Panels in stainless steel and painted steel
- Roll with polyester and cotton, Nomex option
- Several voltages available

## 3. MAIN FEATURES

### R-18/100 & R-18/120 MODELS

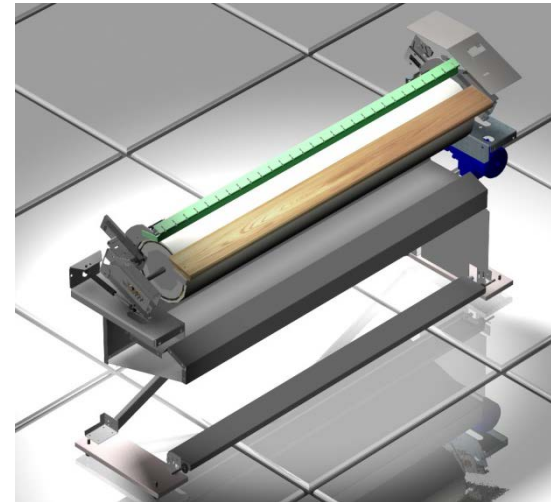
- Stainless steel and painted panels
- Roll dimensions
  - 1000\*Ø180 mm
  - 1200\*Ø180 mm
- Pedal with manual lifting of the bed
- Microprocessor:
  - start/stop button
  - selection 4 temperatures.



## 3. MAIN FEATURES

### R-25/100, R-25/120, R-25/140 MODELS

- Stainless steel and painted panels
- Roll dimensions
  - 1000\*Ø250 mm
  - 1200\*Ø250 mm
  - 1400\*Ø250 mm
- Pedal for automatic lifting of the bed.
- Microprocessor:
  - digital screen
  - precise control of temperature.





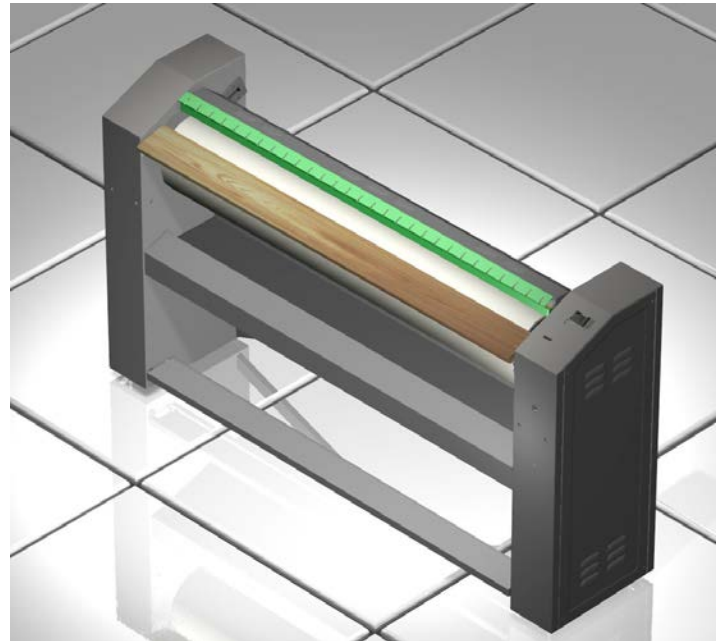
## 4. ACCESSORIES AND OPTIONS

### All models

- Nomex version: padding and cover in Nomex

### For models R-25/100, R-25/120, R-25/140

- Voltage 230V I (single phase)
- Frequency 60Hz.



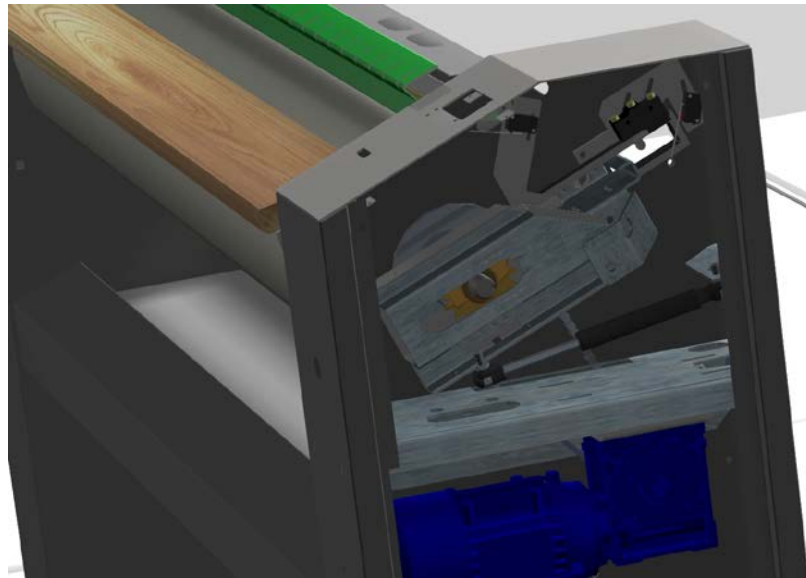
## 5. TECHNICAL DATA

	UNIT	R-18/100	R-18/120	R-25/100	R-25/120	R-25/140
Theoretical production 10-15% humidity	Kg/h	15	20	30	35	40
Ø Roll	mm	180	180	250	250	250
Working width	mm	1000	1200	1000	1200	1400
Height to feeding table	mm	900	900	900	900	900
Electronic programmer		Yes	Yes	Yes	Yes	Yes
Bed movement		Manual	Manual	Auto	Auto	Auto

## 5. TECHNICAL DATA

### WORKING SPEED

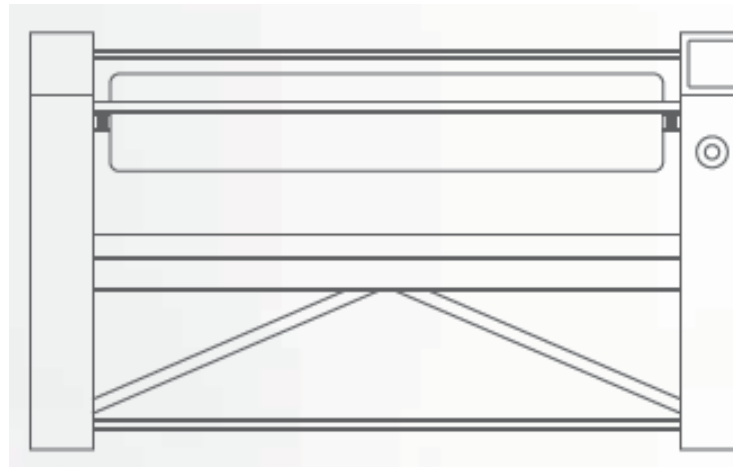
	R-18/100	R-18/120	R-25/100	R-25/120	R-25/140
M/min	2.02	2.02	4.2	4.2	4.2



# 5. TECHNICAL DATA

## NET / PACKING DIMENSIONS:

	R-18/100	R-18/120	R-25/100	R-25/120	R-25/140
Width mm	1286/1500	1486/1700	1400/1500	1600/1700	1800/1900
Depth mm	408/500	408/500	435/500	435/500	435/500
Height mm	970/1170	970/1170	1005/1170	1005/1170	1005/1170
Weight kg	74/89	84/102	110/125	120/138	130/150



## 6. SALES ARGUMENTS

- The design of the bed is made to offer more contact surface of the roll with the linen to iron, for an easier and more user-friendly feeding operation.
- The rounded end of the bed makes the feeding of the linen easier.
- Ergonomic position of the display – better visibility of the screen during operation.

